

OP-F412 | Sloped cathedral roofs ventilator

Description

The low slope roofs cathedrals are vulnerable to accumulations of snow because they have a limited air volume in the attic space. The warm air entering the attic quickly mixes with the cold air creating condensation and mold. Traditional systems, which cover in a continuous part all the roof ridge, are liabilities because of a very small height systems, and therefore, are often covered with snow after a first accumulation, making them totally ineffective.

Benefits

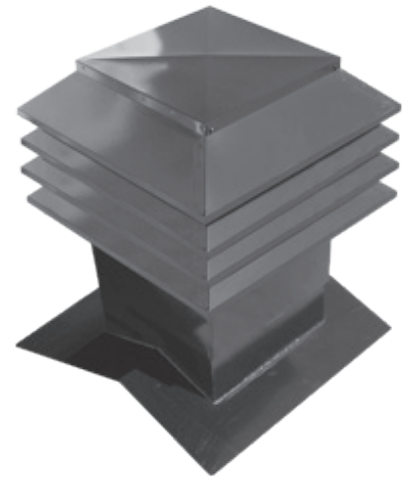
This product type has no suction force, thus only allows the rising warm air drain slowly through these holes.

Application

Optimum cathedral ventilation system is expressively designed to eliminate the warm moist air entering the attic that can condense. Our roof attic ventilators are very efficient Fresh air enters through the soffits, at the bottom of the slope and goes up to the ventilator to be evacuated by it. The soffit air flow happens very quickly to the ventilator eliminating condensation in the attic.

Use

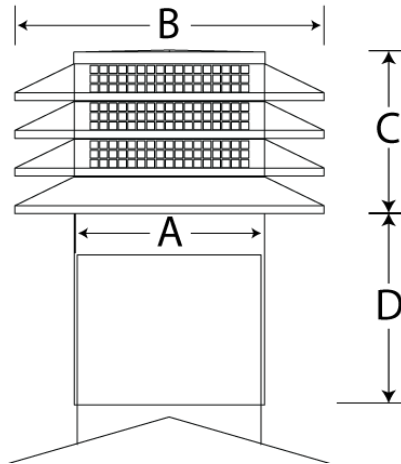
Attic ventilation is required by Canada's building code. This requires keeping air circulating through the attic. Ideally, the attic temperature should be, within a few degrees of the temperature of the outside air. In summer, an Optimum ventilator allows excess heat to escape from the attic. Otherwise, excess heat radiates inside the house and warms up the interior. It can also create seepage problems, warp roof coatings or curl asphalt shingles. An air conditioner then must work continuously to cool down interior living areas. In wintertime, interior house air is warmer and contains more vapor, as opposed to the drier and colder attic air. Water vapor has a tendency to flow into the attic and condensate on colder building structure pieces. This condensation can dampen and compress insulation. This reduces the factor which then allow more water vapor migration into the attic. This humidity leads to ice formation on the roof, mildew and rot of the structure.



It is necessary to ensure that the base is completely watertight. A joints on the base must be well covered by proper products which make them completely waterproof. Make sure to cover the original joint located at the base of the flashing.

The national building code requires adequate ventilation of the attic, according to the minimum standard of Section 9.19.1 or according to CSA CAN3-A93-M82

Dimensions and special characteristics



The ventilator structure is made of galvanized steel. It is covered with baked powder coat paint.

PRODUCT	DIMENSIONS				EVACUATION	NUMBER OF DEFLECTORS	STEEL GAUGE USED
	A	B	C	D			
OP-F412	30,4 cm • 12"	49,5 cm • 19,5"	25,4 cm • 10"	27,9 cm • 11"	0,09 m ² • 144 in. ²	4	22 - 24 & 26
OP-F414	35,6 cm • 14"	54,6 cm • 21,5"	25,4 cm • 10"	30,5 cm • 12"	0,12 m ² • 196 in. ²	4	22 - 24 & 26
OP-F516	40,6 cm • 16"	59,6 cm • 23,5"	31,7 cm • 12,5"	30,5 cm • 12"	0,16 m ² • 256 in. ²	5	22 - 24 & 26
OP-F518	45,7 cm • 18"	64,7 cm • 25,5"	31,7 cm • 12,5"	30,5 cm • 12"	0,20 m ² • 324 in. ²	5	22 - 24 & 26
OP-F620	50,8 cm • 20"	69,8 cm • 27,5"	37,5 cm • 14,75"	30,5 cm • 12"	0,26 m ² • 400 in. ²	6	22 & 24
OP-F622	55,8 cm • 22"	74,9 cm • 29,5"	37,5 cm • 14,75"	30,5 cm • 12"	0,31 m ² • 484 in. ²	6	22 & 24
OP-F724	60,9 cm • 24"	80 cm • 31,5"	43,8 cm • 17,25"	30,5 cm • 12"	0,37 m ² • 576 in. ²	7	22 & 24

- Models OP-F412 to OP-F724 are available with filter if needed.
- Models OP-F414, OP-F516, OP-F518, OP-F620, OP-F622 and OP-F724 are available on special orders only.
- These products are available on special order only. You must specify the exact slope of the roof and your choice of color.
- There are other color choice available, see our website.

The exhaust area based on air evacuation ratio.

Warranty

It is the responsibility of the customer and consumer to verify the suitability of this product for the intended purpose. Since the installer's skill, weather and surface conditions are beyond the manufacturer's control, we limit our liability to the replacement of defective material only in sealed container, within 1 year of proof of purchase. FOB plant.